

LogistiCenter at Logan

Logan Township, New Jersey

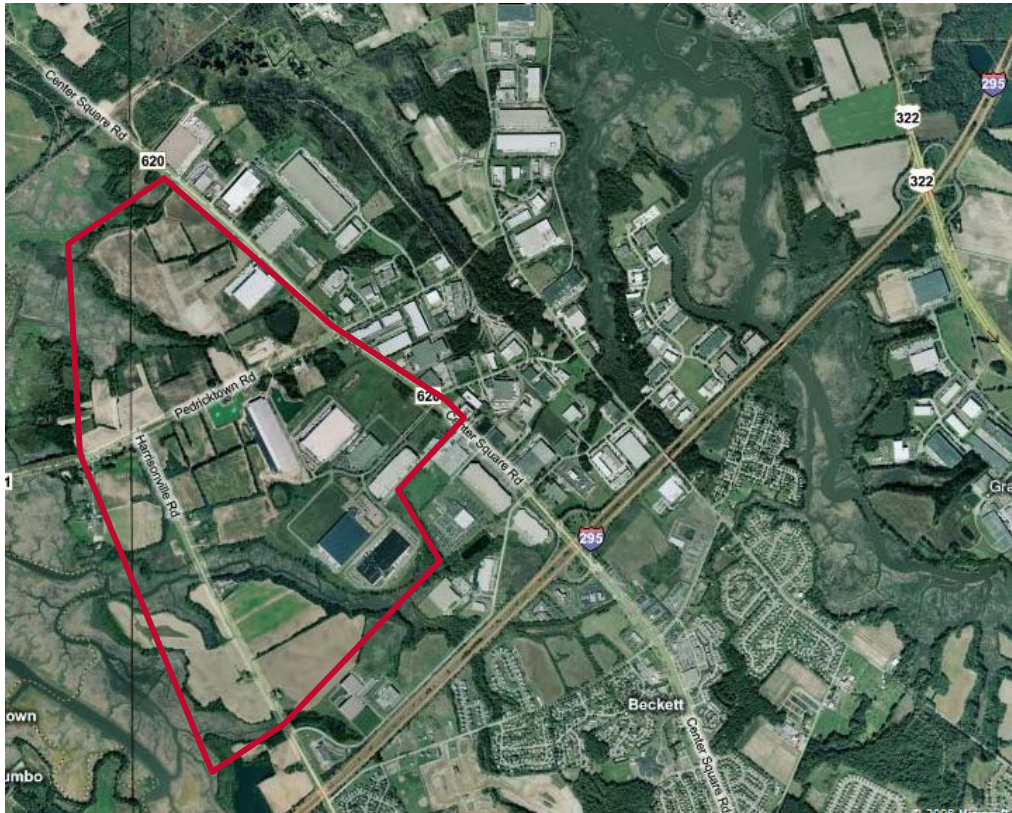


Grow your business at this approved, “shovel-ready” class “A” industrial park.

Join Freightliner, Kimberly Clark, McKesson Healthcare, Cardinal Health, KMT Logistics, Tech Data, and La Brea Bakery at this premier east coast logistics hub.

LogistiCenter is competitively priced, offers a large well-educated labor pool, and is being developed in an environmentally responsible way.

- 10,000 square feet to 1,000,000+ square feet
- Improved sites available for sale
- Buildings available for sale or lease
- 1,100 acre Class A Industrial Park
- Exit 10 of I-295 and Exit 2 of NJ Turnpike
- Minutes to Delaware River Bridges and Ports of Philadelphia, Camden & Wilmington
- CSX and Norfolk Southern Rail
- 20 Minutes to Philadelphia International Airport



Premier Northeast Distribution Hub

Developed By



Commercial Real Estate Services, Worldwide.

All information furnished regarding property for sale, rental or financing is from sources deemed reliable, but no warranty or representation is made as to the accuracy thereof and same is submitted subject to errors, omissions, change of price, rental or other conditions, prior sale, lease or financing or withdrawal without notice. No liability of any kind is to be imposed on the broker herein.

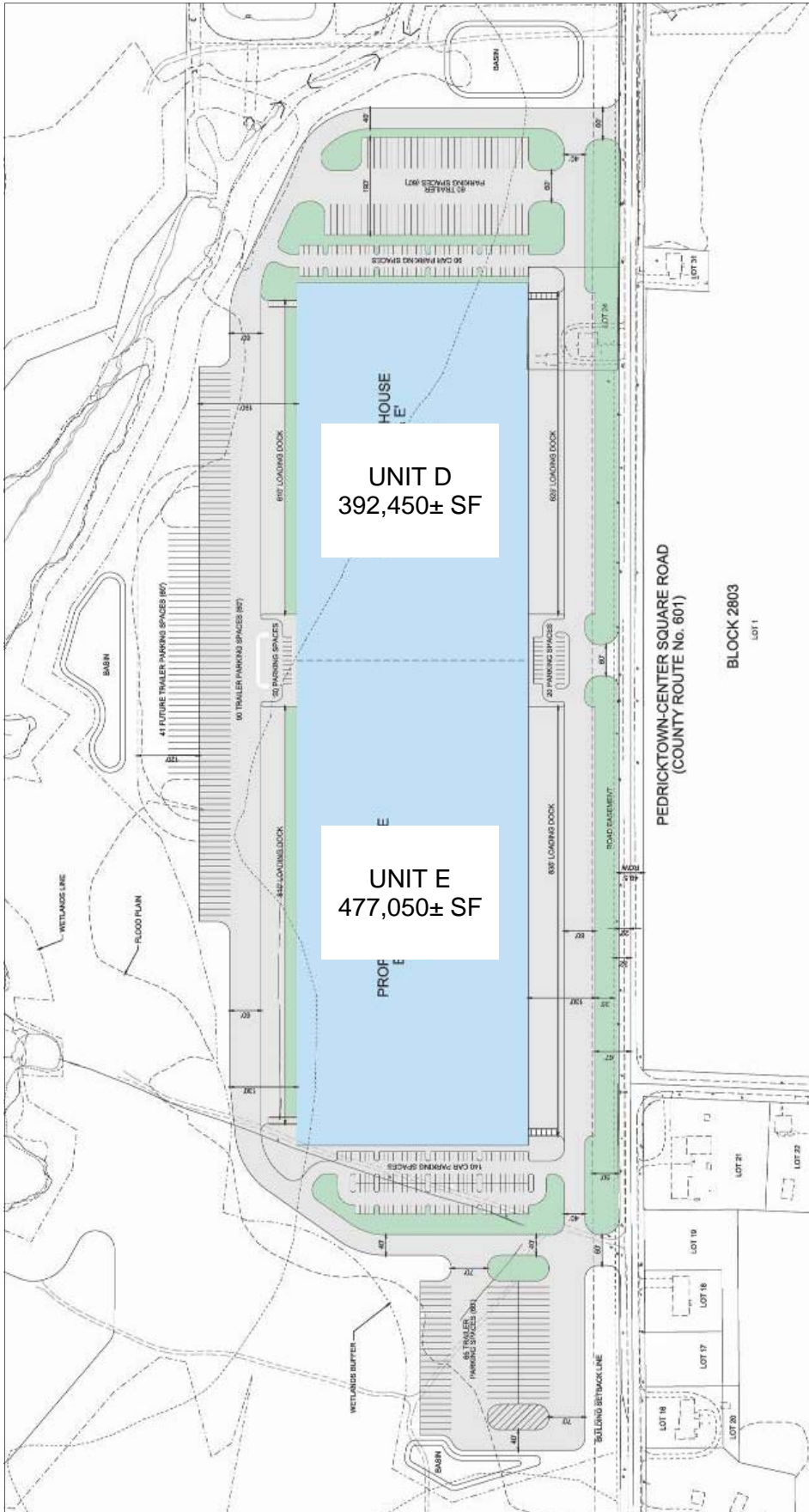
Contact Information

NAI Mertz
21 Roland Ave, Mt. Laurel, NJ 08054
tel 856 234 9600 fax 856 234 4957

<http://www.naimertz.com/logisticenter/>

Under Development

869,500± SF Building (Divisible)



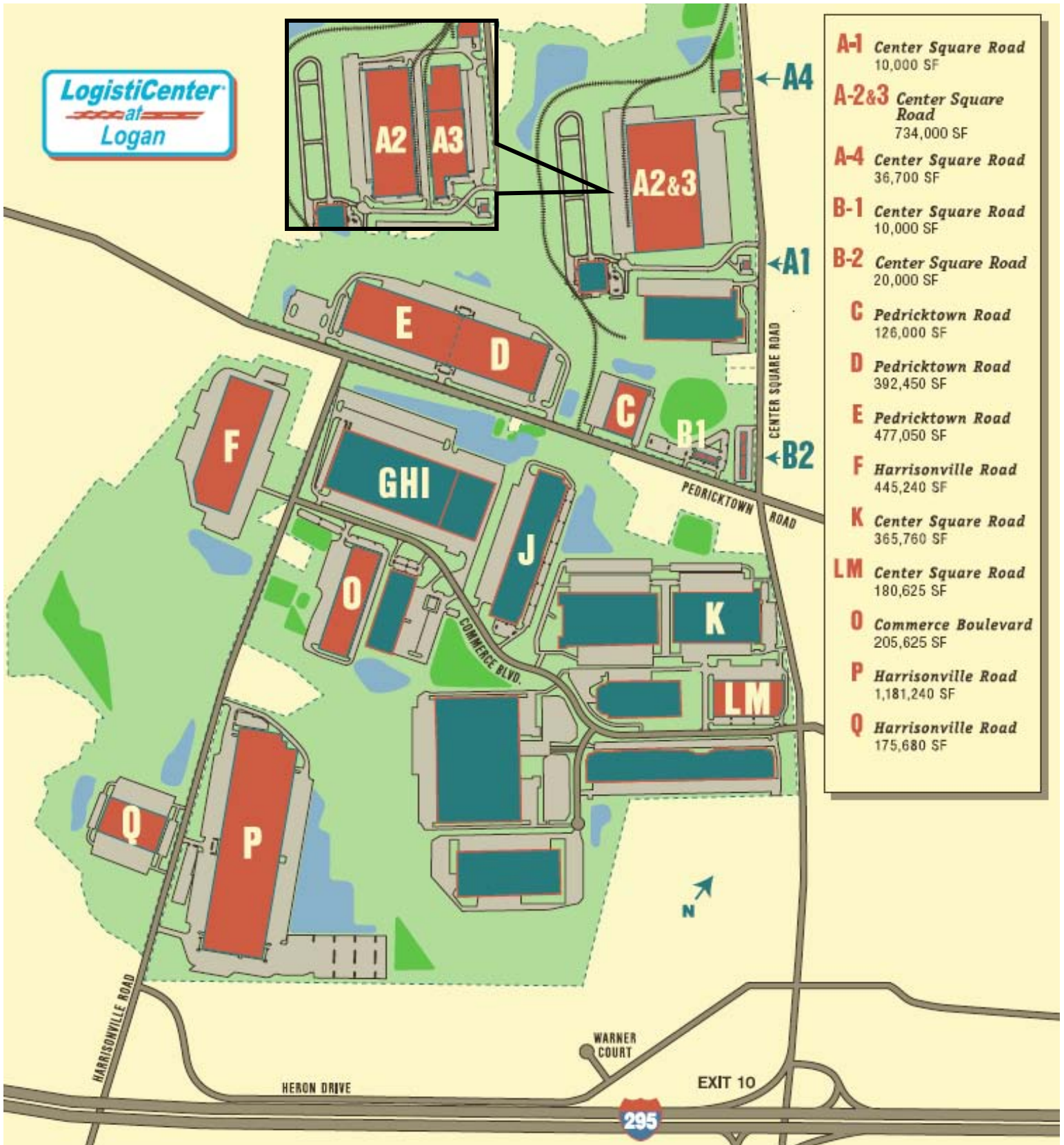
Building will feature:

- Two units D & E
 D = 392,450± SF
 E = 477,050± SF
- 32' clear ceiling height
- 50' x 58' 4" column spacing
- ESFR fire suppression system
- T-5 lighting
- Cross-dock tailgates with levelers:

D	=	50 doors
E	=	<u>58 doors</u>
Total	=	108 doors
- Drive-in ramps:

D	=	2
E	=	<u>2</u>
Total	=	4
- Extensive trailer parking
- Offices to suit
- LEED certified construction

LogistiCenter "Master Plan"



25 miles to Wilmington, DE
 27 miles to Philadelphia, PA
 38 miles to Harrisburg, PA
 75 miles to Allentown, PA
 91 miles to Baltimore, MD
 106 miles to New York City
 127 miles to Washington, DC
 306 miles to Pittsburgh, PA



Commercial Real Estate Services, Worldwide.

Contact Information

21 Roland Ave, Mt. Laurel, NJ 08054
 tel 856 234 9600 fax 856 234 4957

Stephen Blau
 stephen.blau@naimertz.com
 direct 856 802 6511

Fred Meyer, SIOR
 fred.meyer@naimertz.com
 direct 856 802 6515

Scott Mertz, SIOR
 scott.mertz@naimertz.com
 direct 856 802 6529

Tony DiDio, SIOR
 tony.didio@naimertz.com
 direct 856 802 6512

Roy Kardon, SIOR
 roy.kardon@naimertz.com
 direct 856 802 6510